

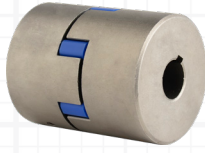
Martin

Coupling Nomenclature

Coupling Nomenclature



Quadra-Flex® Couplings



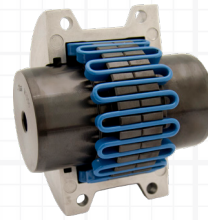
Jaw Couplings



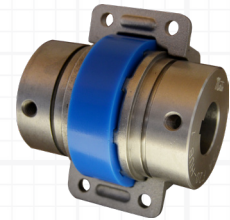
Martin-Flex® Couplings



Chain Couplings



Blue-Flex® Grid Couplings



Go-Flex® Flexible Couplings

QUADRA-FLEX®

Flange Size 3, 4, 5, 6, 7, 8, 9, 10, 11, 12, 13, 14, 18	5 J 3/4	8 JEM-MD	Add if Metal Detectable
Flange	J Sintered Steel, BTS S Cast Iron, BTS B Cast Iron, QD Bushing SC Spacer Coupling Flange	Sleeve Material JEM TPR - 1 pc solid, Thermoplastic JEMS TPR - 1 pc split, Thermoplastic EM TPR - 2 pc with retaining ring E EPDM - 2 pc with retaining ring N Neoprene - 2 pc with retaining ring H Hytrel - 1 pc solid HS Hytrel - 2 pc	
Hubs (for SC Flanges) H Spacer Coupling Hub HS Spacer Coupling Hub Short		Sleeve Size (3 to 16)	
Bore Note: Bored-to-Size flanges are furnished with standard keyway and 2 setscrews unless specified otherwise			

The complete Quadra-Flex Coupling assembly consists of 2 flanges and a sleeve.
When ordering the flange, specify coupling size, followed by the flange type and finally the bore size.
When ordering the coupling sleeve, specify the coupling size followed by the letters designating the material required.

JAW

Type ML Universal MS Super	ML 090 SS 1	SRL 090-MD
Size 035, 050, 070, 075, 090, 095, 099, 100, 110, 150, 190, 225		Add if Metal Detectable Size see Jaw
Material leave blank for steel SS Stainless Steel		Element (Spider) SRL Buna-N SHL Hynthel SUL Urethane SBL Bronze
Bore		

ROLLER CHAIN

Chain Size 4012, 4016, 5016, 5018, 6018, 6020, 6022, 8018, 8020, 10018, 10020, 12018, 12022	4016 1 1/4	Bore Size or Bushing JA QD TBH, TBF Taper
	4016 COV	4016 CHN
	Plastic: 4012-6020 Aluminum: 6022-12022	Chain

Martin FLEX®

Type 5, 6, 7, 8, 9, 10, 11, 12	F5 JA	Size 1020 to 1200	Hub Bore Size
Bore JA, SDS, SF, SH, SK, E		Martin Blue-Flex®	Cover Style 10 Horizontal 20 Vertical

BLUE-FLEX® GRID

1020M-GRID	Grid	1020M10-COV	Parts & Kits
1020M-HUB 3/4	Bore Size Hub	Cover Style 10 Horizontal 20 Vertical	COV Cover & Accessories FAS Fastener Set SUBASYS Cover Kit & Grid SEAL Seal Kit

GO-FLEX®

Go-Flex®	GF 20 CS 010 H	Hub
Size 10, 20, 30, 40, 50, 60, 70, 80, 90, 100, 110, 120		
Material CS Carbon Steel SS Stainless Steel		
Bore Size*		
PB Plain Bore	103 1-3/16" 114 1-7/8" 207 2-7/16"	
008 1/2"	104 1-1/4" 115 1-15/16" 208 2-1/2"	
010 5/8"	106 1-3/8" 200 2"	
012 3/4"	107 1-7/16" 202 2-1/8"	
014 7/8"	108 1-1/2" 203 2-3/16" 214 2-7/8"	
100 1"	110 1-5/8" 204 2-1/4" 215 2-15/16"	
102 1-1/8"	112 1-3/4" 206 2-3/8" 300 3"	

Go-Flex® GF 20 SD-INS

Size 10, 20, 30, 40, 50, 60, 70, 80, 90, 100, 110, 120
Insert Type SD Standard Duty (Red) MD Medium Duty (Dark Blue) XD Extreme Duty (Black) HT Hi-Temp (White) FG Metal Detectable (Light Blue)
Insert

Go-Flex® GF 20 HP-CVR

Size 10, 20, 30, 40, 50, 60, 70, 80, 90, 100, 110, 120
Cover Type SD Standard Duty (Carbon Steel) SS Standard Duty (Stainless Steel) XP Horizontal Split VS Vertical Split HS Horizontal/Vertical Split
Cover